

SHELF LIFE

MOHAWK VALLEY LIBRARY SYSTEM



CHECK OUT KITKEEPER

All your favorite kits and some shiny new ones

The 2023 stats for kit usage are in! It has been one year since we added the KitKeeper software to make it easy to reserve kits. The number of kit loans more than doubled, going from 184 loans in 2022 to 377 in 2023.

We attribute the dramatic increase to both the new KitKeeper process that makes the loan system easier, along with the addition of new kits and tools such as rubber stamps and ink, paper punches, jewelry pliers, craft supplies, and much more.



LEGO and DUPLO are still the most commonly requested items.

The Big Play kits are a close second with many options for pre-K play and fun colorful objects to stimulate little fingers and curious minds. Can you name all nine Big Play kits?

Beth has been busy adding more kits. These latest additions are ready to borrow:

- Five new Big Books
- A variety of storytelling felts and flannel boards
- A new Big Play Kit called "Tiny Tots Playdate" for babies and young toddlers, (from birth to age two)
- A new Start with Science Kit about Architecture. This kit has new building toys, brand new read-aloud books, information about the importance of construction play in child development, and many fun program/activity ideas.

- continued on page 2 -

IN THIS ISSUE:

Trustee Corner - Page 2

Upcoming Events - Page 2

Advocacy Update - Page 3

AI at a Glance - Page 4

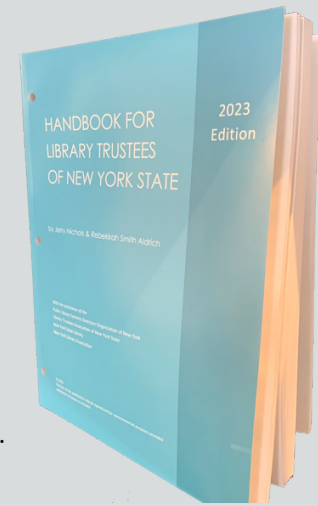
TRUSTEE CORNER

Are you looking for the new 2023 version of the Trustee's Handbook?

MVLS received a limited number of copies, and some of those have been provided to individual libraries. While it is not yet available on the Division of Library Development's website, there is a [link to the online version](#) of the handbook. Contact Wade at wabbott@mvls.info if your library needs additional copies.

Are you looking to complete your annual trustee training requirements?

Keep an eye out for details on the Spring Symposium on May 2nd at the Margaret Reaney Memorial Library in St. Johnsville. Participation counts toward your hours.



KITKEEPER

Continued from page 1...

Libraries can access KitKeeper through the MVLS website by clicking on the Program Resources icon to check availability or to reserve a kit. Kits are available for library use and are intended for pre-K through adult audiences.

The process to request a Start with Science kit has not changed. These kits are available to borrow through Polaris, and they are wonderful resources available to support and enhance your programs.

Send your questions or suggestions to Beth at brienti@mvls.info.

UPCOMING EVENTS

Save the Dates!

YSS Spring Conference

Friday, April 19th | Clayton, NY

GOAT Workshop

Tuesday, April 30th | East Greenbush Community Library

MVLS Spring Symposium

Thursday, May 2nd, 3 - 5 pm | Margaret Reaney Memorial Library

How to Start a Friends Group

Thursday, May 9th, 10 am | Clifton Park-Halfmoon Library



Exciting news! Based on your feedback, we have added a Nintendo Switch console with four Joy-Con controllers and all the accessories you will need to host a gaming event. It comes pre-loaded with Mario Kart Deluxe 8 and a Super Smash Bros Ultimate game card. It is now available in KitKeeper. If you are not familiar with the Switch, please allow time for charging, set up, and testing before your program.





Budget Negotiations Underway

In February, 19 MVLS library directors, staff members, trustees, and patrons from all four counties joined hundreds of library advocates in Albany to share the importance of funding libraries in the state budget.

A few weeks ago, the State Assembly and Senate each released their “One-House Budgets.” This is a step in the budget process where each house of the legislature modifies the executive budget proposal, often by increasing funding in certain areas. This year, both houses proposed modest increases in funding for Library Operating Aid and significant increases in Library Construction Aid.

These proposed increases were not as much as we were hoping, but it is a step in the right direction.

Here are some of the highlights from the one-house budgets:

Library Operating Aid

The Assembly and Senate both proposed \$104.6 million in funding (\$2.5 million increase from the executive budget).

Library Construction Aid

The Assembly proposed \$68 million in funding (\$34 million increase from executive budget). The Senate proposed \$54 million (\$20 million increase).

NOVELny

The Assembly and Senate both proposed \$3 million in funding (no change from the executive budget).

State budget negotiations are underway, after the Governor and the Legislature took a brief break for the Easter holiday. Technically, the budget will be late this year because the April 1st deadline has passed, but we could see a state budget as early as April 4th.

Last year, things looked good for increases in funding, but the final negotiated budget was extremely disappointing. We hope our Library Advocacy Superstars have convinced our representatives to correct that oversight this year! (See below)

LIBRARY ADVOCACY SUPERSTARS

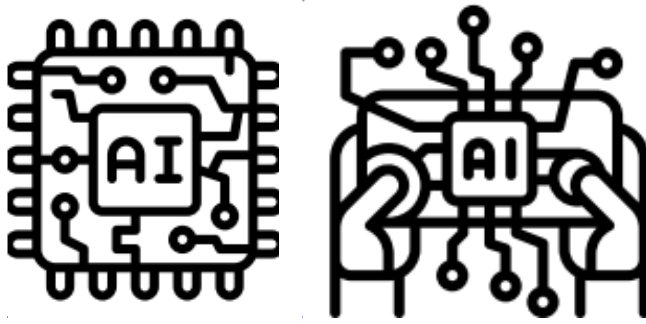
19 individuals representing libraries in Schenectady, Schoharie, Montgomery, and Fulton Counties spent a day in Albany advocating for funding for libraries across New York State.



Advocates meet in Albany on Library Advocacy Day with Assemblyman Angelo Santabarbara, Chair of the Assembly Committee on Libraries & Education Technology



Staff and Trustees from Schenectady County Public Library (top) and Gloversville Public Library (bottom) are recognized as Library Superstars for advocacy and other efforts.



ARTIFICIAL INTELLIGENCE (AI) AT A GLANCE

From the Tech Tutor

With all the buzz about AI and its endless possibilities, it can be hard to imagine how it will impact our libraries and our society.

There have been, and always will be, advancements in technology that we do not understand or that cause us to fear the worst. The best way to eliminate these fears is by learning more.

Here are a few definitions and examples that can jumpstart an understanding of AI.

Artificial Intelligence: the theory and development of computer systems able to perform tasks that normally require human intelligence, such as visual perception, speech recognition, decision-making, and translation between languages.

Predictive AI: uses large data repositories to recognize patterns. Predictive AI products and services are already here.

Examples of Predictive AI:

- Voice recognition digital assistants such as Siri, Alexa, and Google Assistant
- Recommendations made by Netflix, Amazon, and Spotify
- Social media feeds by Instagram and Facebook using AI and algorithms based on your user behavior to select which posts you see first
- Apps that identify plants, animals, people, sounds, and more
- Translation tools such as Google Translate

Generative AI: uses modeling to create images, text, videos, etc. based on user prompts.

Examples of Generative AI:

[ChatGPT \(https://openai.com\)](https://openai.com)

ChatGPT creates text content based on prompts.

(Account creation with an email address and password is required for more than five responses.)

Prompt ChatGPT on anything. Examples of ChatGPT prompts:

- Brainstorm ideas for a teen program using technology.
- Write six rules for sharing for children aged four to six.
- Write a four line poem about boats.
- Think of an event title for a summer family picnic, and suggest activities.

Other common uses include vacation planning, event planning, resume and letter writing, outlines, and more.

- continued on page 5 -

OUTREACH MINI-GRANTS

MVLS will award winning member libraries between \$250 and \$1,500 for projects that provide services to outreach populations. Competitive mini-grant applications are due to Beth by Friday, April 26th.

Please reach out to Beth at brienti@mvls.info with any questions.

OUTREACH MINI-GRANT



AI AT A GLANCE

Continued from page 4...

Microsoft Office Copilot (<https://copilot.microsoft.com>) Copilot creates text content, image content, and more based on prompts. (Currently only supported in Edge and Google Chrome browsers). A Microsoft account is required. If you are trying this on a shared computer, select “No” to “Stay signed in”.

The Copilot interface includes subcategories of Vacation Planner, Cooking Assistant, and Fitness Trainer. Copilot is able to vary its response style based on the user’s choice between more creative, more balanced, or more precise. Copilot is different from ChatGPT since it provides the sources of the content provided.

Another subcategory of Copilot is Designer, (powered by DALL-E 3). Users can use it to create imaginative images. Users can even suggest a specific medium such as “in the style of Norman Rockwell” or “using watercolors.”



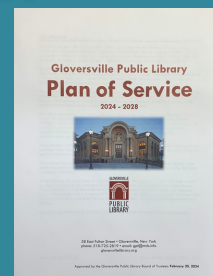
Prompt: library cat listening to an audiobook
Generated by AI (Microsoft Copilot) - March 18, 2024.

When generative AI is not used responsibly, there is a chance for misinformation, plagiarism, copyright infringement, bias, and ethical concerns. When used responsibly, generative AI works well as a creativity tool and a timesaver, and complements different learning styles.

With that knowledge of AI at a glance, now may be the time to dig further and learn more!

A NEW PLAN OF SERVICE FOR GLOVERSVILLE PUBLIC LIBRARY

Congratulations to Groversville Public Library for completing and adopting a brand new Plan of Service earlier this year!



The process began with a range of community workshops. The information collected was used to create mission & vision statements, followed by library goals, objectives, and tasks, resulting in a detailed Plan of Service. MVLS helped facilitate the process from beginning to end.

Other MVLS libraries are currently working on their strategic plans, or will be embarking upon the process shortly. If you would like MVLS to facilitate this process with your library, please contact Wade at wabbott@mvls.info.

CONTACT US

Do you have questions we can answer? Helpful comments? Want to tell us about something going on at your library? Email us or call us at 518-355-2010.

- **Eric Trahan:** Executive Director, ext. 223, etrahan@mvls.info
- **Sharon O'Brien:** Assistant Director, Member Services Coordinator, ext. 226, sobrien@mvls.info
- **Kate Clingan:** Office Administrator, ext. 221, kclingan@mvls.info
- **Beth Rienti:** Public Services Consultant, ext. 225, brienti@mvls.info
- **Mary Carrier:** Technology & Growth Consultant, ext. 233, mcarrier@mvls.info
- **Wade Abbott:** Community Engagement & Communications Specialist, ext. 230, wabbott@mvls.info